

**CIRBP (aa 161-172) Antibody (C-Term)**  
**Peptide-affinity purified goat antibody**  
**Catalog # AF3287a****Specification**

---

**CIRBP (aa 161-172) Antibody (C-Term) - Product Information**

Application	WB, IHC, E
Primary Accession	<a href="#">Q14011</a>
Other Accession	<a href="#">NP_001271.1</a> , <a href="#">1153</a> , <a href="#">12696 (mouse)</a> , <a href="#">81825 (rat)</a>
Reactivity	Human, Mouse, Rat
Predicted	Dog
Host	Goat
Clonality	Polyclonal
Concentration	0.5 mg/ml
Isotype	IgG
Calculated MW	18648

**CIRBP (aa 161-172) Antibody (C-Term) - Additional Information****Gene ID** 1153**Other Names**

Cold-inducible RNA-binding protein, A18 hnRNP, Glycine-rich RNA-binding protein CIRP, CIRBP, A18HNRNP, CIRP

**Dilution**WB~~1:1000  
IHC~~1:100~500  
E~~N/A**Format**

0.5 mg/ml in Tris saline, 0.02% sodium azide, pH7.3 with 0.5% bovine serum albumin

**Storage**

Maintain refrigerated at 2-8°C for up to 6 months. For long term storage store at -20°C in small aliquots to prevent freeze-thaw cycles.

**Precautions**

CIRBP (aa 161-172) Antibody (C-Term) is for research use only and not for use in diagnostic or therapeutic procedures.

**CIRBP (aa 161-172) Antibody (C-Term) - Protein Information****Name** CIRBP**Synonyms** A18HNRNP, CIRP

**Function**

Cold-inducible mRNA binding protein that plays a protective role in the genotoxic stress response by stabilizing transcripts of genes involved in cell survival. Acts as a translational activator. Seems to play an essential role in cold-induced suppression of cell proliferation. Binds specifically to the 3'-untranslated regions (3'-UTRs) of stress-responsive transcripts RPA2 and TXN. Acts as a translational repressor (By similarity). Promotes assembly of stress granules (SGs), when overexpressed.

**Cellular Location**

Nucleus, nucleoplasm. Cytoplasm Note=Translocates from the nucleus to the cytoplasm after exposure to UV radiation. Translocates from the nucleus to the cytoplasm into stress granules upon various cytoplasmic stresses, such as osmotic and heat shocks. Its recruitment into stress granules occurs in the absence of TIAR proteins (By similarity).

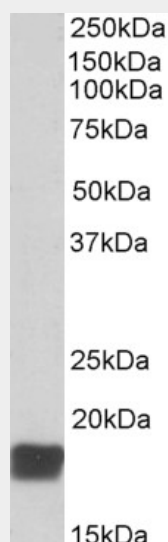
**Tissue Location**

Ubiquitous.

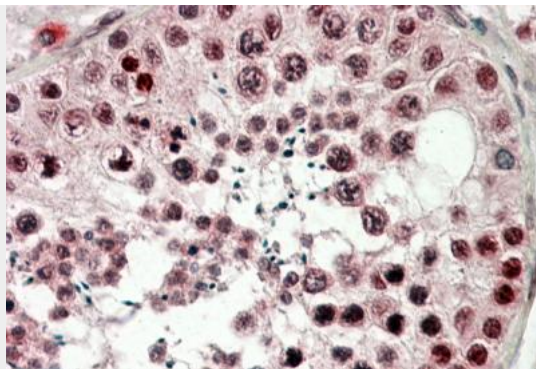
**CIRBP (aa 161-172) Antibody (C-Term) - Protocols**

Provided below are standard protocols that you may find useful for product applications.

- [Western Blot](#)
- [Blocking Peptides](#)
- [Dot Blot](#)
- [Immunohistochemistry](#)
- [Immunofluorescence](#)
- [Immunoprecipitation](#)
- [Flow Cytometry](#)
- [Cell Culture](#)

**CIRBP (aa 161-172) Antibody (C-Term) - Images**

AF3287a (0.01 µg/ml) staining of Mouse Testis lysate (35 µg protein in RIPA buffer). Primary incubation was 1 hour. Detected by chemiluminescence.



AF3287a (3.8 µg/ml) staining of paraffin embedded Human Testis. Steamed antigen retrieval with citrate buffer pH 6, AP-staining.

#### **CIRBP (aa 161-172) Antibody (C-Term) - References**

Down-regulating cold shock protein genes impairs cancer cell survival and enhances chemosensitivity. Zeng Y, Kulkarni P, Inoue T, Getzenberg RH, Journal of cellular biochemistry 2009 May 107 (1): 179-88. PMID: 19277990